

MindPalace Pocket

The MindPalace Pocket is a compact, lightweight 3D data collection device designed for mobile and handheld use. Ideal for a wide range of applications, this device integrates high-precision lidar and real-time color point cloud feedback to deliver efficient, accurate data capture.

General Laser is the European Distributor of Manifold Tech.



MindPalace Pocket
Mobile Lidar Scanner

Dual industrial-grade global shutter cameras

Capture true-color, wide-angle images at 5 megapixels, eliminating motion blur thanks to advanced global shutter technology.

Portable and lightweight

Weighs only 560 g, enabling stress-free handheld operation or seamless integration with robotic platforms.

Modular design

Equipped with hot shoe mounts and a type-C interface to support external payloads like robots, panoramic cameras, or RTK systems.

Real-time data

Instantly preview point cloud data through the MindCloud-GO app for efficient, on-the-fly modifications.



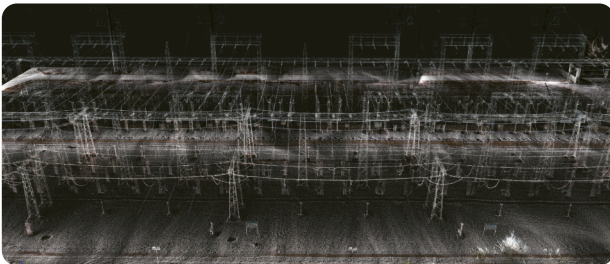
SWIFT 3D RECORDING OF FIRE AND CRIME SCENES

Rapidly capture accurate 3D data to document and analyze critical environments for investigation and safety assessment.



OPTIMIZED DATA COLLECTION FOR BIM MODELING

Enhance Building Information Modeling (BIM) processes with precise, real-time 3D data for efficient project execution.



STREAMLINED PATROL AND MONITORING

Improve surveillance and inspection operations with quick and reliable data collection for better decision-making.



INDOOR MEASUREMENT AND AI RENDERING

Accurately measure and create AI-powered visualizations of indoor spaces for various design, planning, and operational needs.

Specifications

Laser wavelength	905 nm
Laser range	Up to 40 m @ 10% reflectivity, 70 m @ 80% reflectivity
Lidar point cloud density	40 lines
Lidar point rate	200,000 points/s (first return)
Lidar frame rate	10 Hz
Cameras	Dual fisheye 5 megapixel global shutter camera
Battery life	2 hours
Dimensions (main unit)	115 × 110 × 83 mm
Weight (main unit)	560 g

Errors and technical modification subject to change.

Contact us

office@general-laser.at

general-laser.at

+43 1 890 2002

manifold.com.co

