

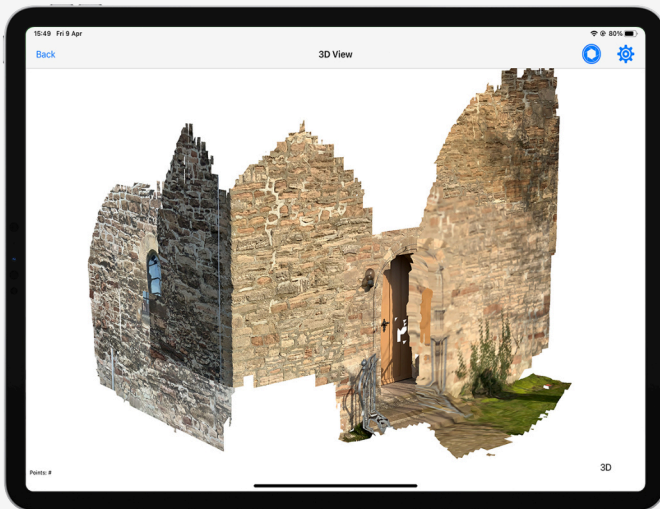


Transform your smartphone or tablet into a centimeter-precise surveying system or a handheld laser scanner.

iPhone Mapping Kit



GeoAce



ScanAce

Reach RX

Multi-band network RTK rover

- Tracks GPS/QZSS1C/A, L2C, GLONASS L10F, L20F, BeiDou B1I, B2I, Galileo E1-B/C, E5b
- Gets a fix in 5 seconds
- Centimeter precision
- Easy to set up: just add NTRIP
- Comes with the Emlid Flow app
- Pocket-sized and lightweight
- 16 hours on 1 charge
- IP68

A powerful combination of the pocket-sized Emlid Reach RX RTK receiver with a phone holder, in a rugged case, with the GIS Apps GeoAce and/or ScanAce from ITS Geo and an iPhone Pro or iPad Pro.



GeoAce

Visual Surveying on the Go

- Visual SLAM positioning and stakeout
- Data collection in Augmented Reality
- External GNSS and Apple Watch support
- Sketch & dimensions
- Can be used indoors, under trees, underground
- Import/Export: GeoJSON, PDF, CSV, SHP, DXF, DWG, DGN, Smallworld, OSM, GPX

ScanAce

3D Scanning and Model Generation

- 3D Scanner & Model Generator
- Georeferences scanned data
- Does not need external processing services or cloud connection
- Standard mode: 350.000 points/second
- Extreme high mode: 1.000.000 points/second
- Exports the RGB point cloud as E57
- Exports textured 3D-model as OBJ

Compatible with: iPad Pro (2020, 2021, or later), iPhone 12-15 Pro, iPhone 12-15 Pro Max.

Contact us

office@general-laser.at

general-laser.at

+43 1 890 2002